

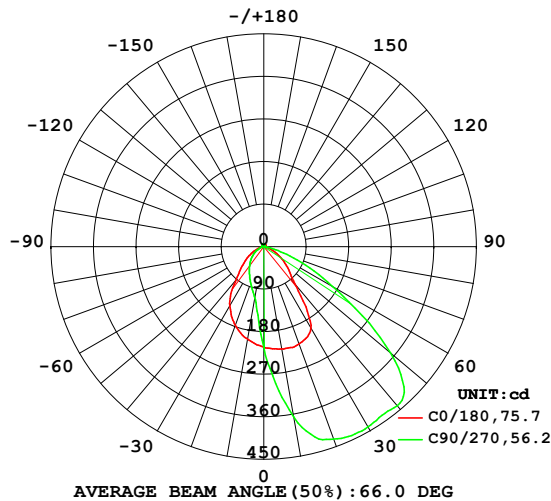
TLO010-51 36V250mA CXA1507-30G-NOY 66D 3000K CRI90 NA

## LUMINAIRE PHOTOMETRIC TEST REPORT

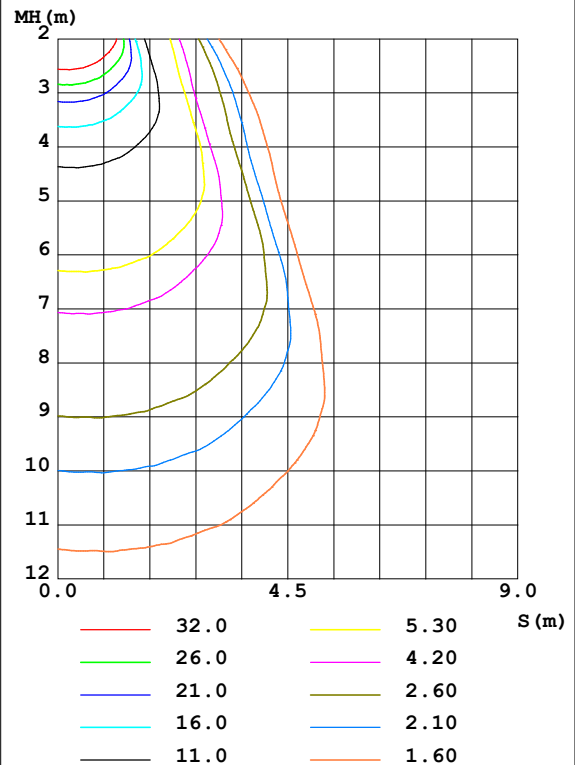
NAME: TLO010-51	TYPE: 66D	WEIGHT: 1
SPEC.: 3000K CRI90	DIM.:	SERIAL No.:
MFR.:	SUR.: 53	Shielding Angle:

DATA OF LAMP		PHOTOMETRIC DATA				Eff: 58.85 lm/W
MODEL		I <sub>max</sub> (cd)	458.0	S/MH (C0/180)	1.05	
NOMINAL POWER (W)	10	LOR (%)	100.0	S/MH (C90/270)	0.35	
RATED VOLTAGE (V)	120	TOTAL FLUX (lm)	618.08	η UP, DN (C0-180)	0.7, 80.3	
NOMINAL FLUX (lm)	618.083	CIE CLASS	DIRECT	η UP, DN (C180-360)	1.6, 17.4	
LAMPS INSIDE	1	η up (%)	2.3	CIBSE SHR NOM	1.00	
TEST VOLTAGE (V)	120	η down (%)	97.7	CIBSE SHR MAX	1.05	

LUMINOUS INTENSITY DISTRIBUTION DIAGRAM



C0 PLANE ISOLUX DIAGRAM (UNIT: lx)



C Range: 0 - 360DEG  
C Interval: 22.5DEG  
Test Speed: HIGH  
Temperature: 28DEG  
Operators: CJY  
Test Date: 2024-08-28

γ Range: 0 - 180DEG  
γ Interval: 1.0DEG  
Test System: EVERFINE GO-2000B\_V1 SYSTEM V2.0.401  
Humidity: 65.0%  
Test Distance: 5.190m [K=1.0000]  
Remarks:

TLO010-51 36V250mA CXA1507-30G-NOY 66D 3000K CRI90 NA

## ZONAL FLUX DIAGRAM

ZONAL FLUX DIAGRAM:

$\gamma$	C0	C45	C90	C135	C180	C225	C270	C315	$\gamma$	$\Phi$ zone	$\Phi$ total	%lum, lamp
10	219.8	328.0	365.5	310.4	198.6	123.4	110.3	126.8	0- 10	20.77	20.77	3.36,3.36
20	219.3	408.3	433.1	388.6	176.7	92.73	81.91	89.00	10- 20	66.04	86.80	14,14
30	199.1	402.7	440.1	399.7	144.5	70.84	61.65	66.04	20- 30	107.9	194.7	31.5,31.5
40	102.9	371.3	439.7	371.6	91.10	52.64	45.59	47.15	30- 40	133.7	328.4	53.1,53.1
50	63.47	226.2	350.2	304.1	56.46	36.86	31.49	30.78	40- 50	130.9	459.2	74.3,74.3
60	35.61	88.13	167.8	118.3	32.54	22.70	18.88	16.71	50- 60	88.36	547.6	88.6,88.6
70	13.74	28.01	60.16	43.60	13.25	10.40	8.019	6.012	60- 70	41.68	589.3	95.3,95.3
80	2.601	3.464	9.093	9.603	2.827	2.647	1.698	0.8959	70- 80	12.93	602.2	97.4,97.4
90	0.3276	0.2370	0.2180	0.3019	0.3257	0.6023	0.8982	0.7073	80- 90	1.640	603.8	97.7,97.7
100	0.5877	0.3799	0.2945	0.2628	0.5885	1.327	1.903	1.494	90-100	0.6821	604.5	97.8,97.8
110	1.083	0.5768	0.4551	0.4328	1.105	2.363	3.171	2.513	100-110	1.209	605.7	98,98
120	1.781	0.8495	0.6595	0.6654	1.853	3.535	4.485	3.530	110-120	1.787	607.5	98.3,98.3
130	2.567	1.239	0.9123	1.014	2.719	4.568	5.488	4.238	120-130	2.233	609.8	98.7,98.7
140	3.377	1.818	1.268	1.518	3.554	5.219	6.026	4.483	130-140	2.395	612.2	99,99
150	4.091	2.634	1.934	2.218	4.221	5.527	6.043	4.507	140-150	2.254	614.4	99.4,99.4
160	4.725	3.618	2.957	3.056	4.804	5.679	5.925	4.766	150-160	1.889	616.3	99.7,99.7
170	5.293	4.638	4.127	3.866	5.352	5.788	5.625	4.897	160-170	1.308	617.6	99.9,99.9
180	5.589	5.473	5.107	4.677	5.598	5.495	5.109	4.677	170-180	0.4778	618.1	100,100
DEG	LUMINOUS INTENSITY:cd									UNIT:lm		

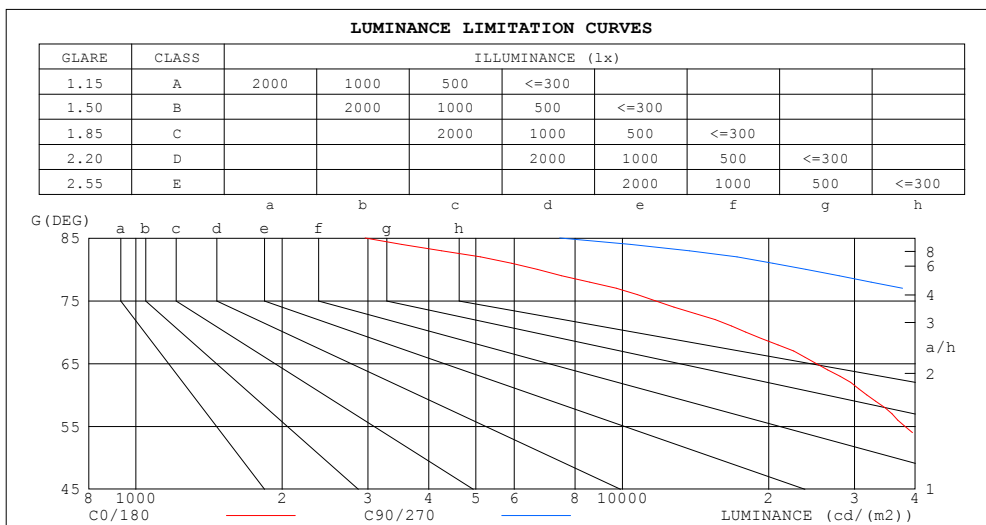
C Range: 0 - 360DEG  
C Interval: 22.5DEG  
Test Speed: HIGH  
Temperature:28DEG  
Operators:CJY  
Test Date:2024-08-28

$\gamma$  Range: 0 - 180DEG  
 $\gamma$  Interval: 1.0DEG  
Test System:EVERFINE GO-2000B\_V1 SYSTEM V2.0.401  
Humidity:65.0%  
Test Distance:5.190m [K=1.0000]  
Remarks:

TLO010-51 36V250mA CXA1507-30G-NOY 66D 3000K CRI90 NA

### LUMINANCE LIMITATION CURVES

NAME: TLO010-51	TYPE: 66D	WEIGHT: 1
SPEC.: 3000K CRI90	DIM.:	SERIAL No.:
MFR.:	SUR.: 53	Shielding Angle:



LUMINANCE cd/(m2)		
G (DEG)	C0/180	C90/270
85	2958	7440
80	6686	23853
75	11677	47271
70	17935	80121
65	25031	115611
60	31787	152912
55	38094	202542
50	44071	248180
45	49925	270359

C Range: 0 - 360DEG  
C Interval: 22.5DEG  
Test Speed: HIGH  
Temperature: 28DEG  
Operators: CJY  
Test Date: 2024-08-28

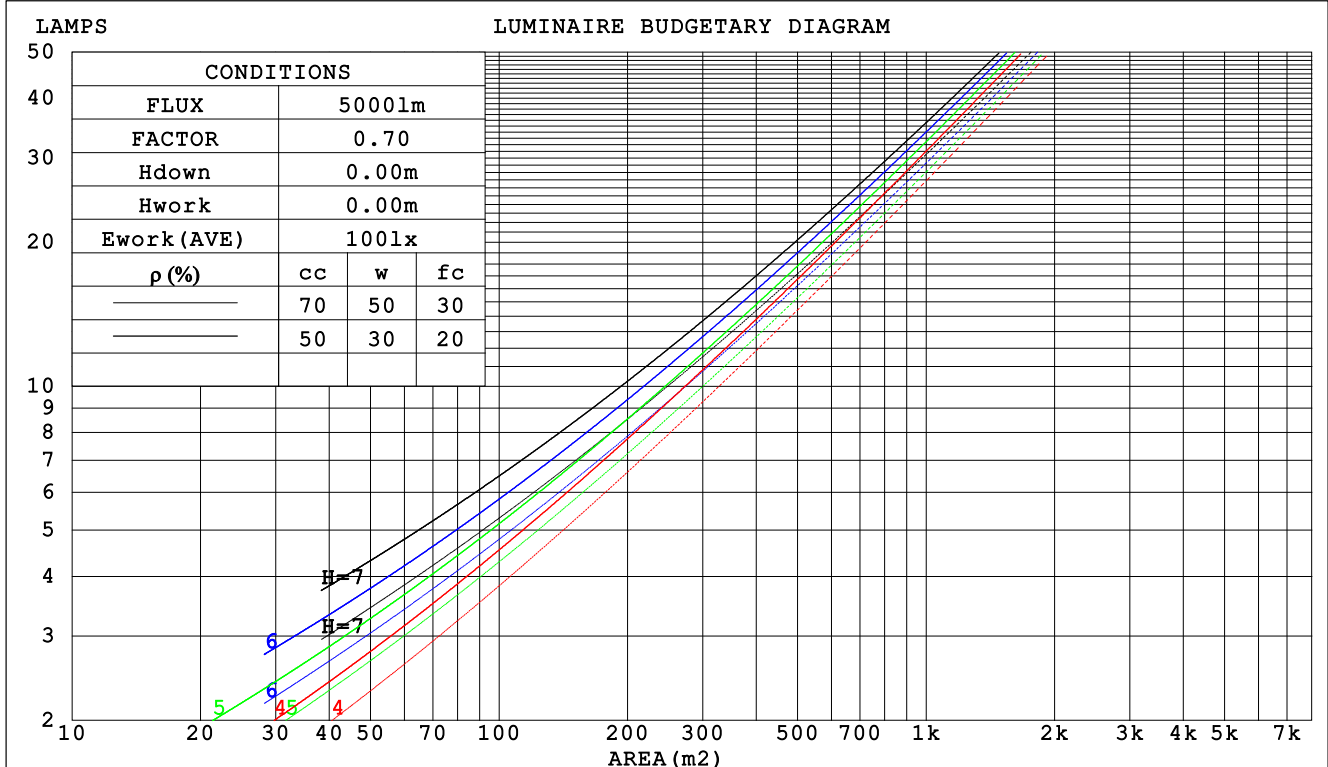
γ Range: 0 - 180DEG  
γ Interval: 1.0DEG  
Test System: EVERFINE GO-2000B\_V1 SYSTEM V2.0.401  
Humidity: 65.0%  
Test Distance: 5.190m [K=1.0000]  
Remarks:

TLO010-51 36V250mA CXA1507-30G-NOY 66D 3000K CRI90 NA

## CU AND LUMINAIRE BUDGETARY ESTIMATE DIAGRAM

NAME: TLO010-51	TYPE: 66D	WEIGHT: 1
SPEC.: 3000K CRI90	DIM.:	SERIAL No.:
MFR.:	SUR.: 53	Shielding Angle:

$\rho_{cc}$	80%			70%			50%			30%			10%			0
$\rho_w$	50%	30%	10%	50%	30%	10%	50%	30%	10%	50%	30%	10%	50%	30%	10%	0
$\rho_{fc}$	20%			20%			20%			20%			20%			0
RCR	RCR:Room Cavity Ratio						Coefficients of Utilization(CU)									
0.0	1.18	1.18	1.18	1.15	1.15	1.15	1.10	1.10	1.10	1.05	1.05	1.05	.00	.00	.00	.98
1.0	1.06	1.03	.00	1.04	1.01	.98	.99	.97	.94	.95	.93	.91	.91	.89	.88	.86
2.0	.94	.89	.84	.92	.87	.83	.89	.84	.80	.85	.81	.78	.82	.79	.76	.74
3.0	.84	.77	.71	.82	.76	.70	.79	.74	.69	.76	.72	.68	.74	.70	.66	.64
4.0	.75	.67	.61	.74	.66	.61	.71	.65	.60	.69	.63	.59	.66	.62	.58	.56
5.0	.68	.59	.53	.66	.59	.53	.64	.57	.52	.62	.56	.52	.60	.55	.51	.49
6.0	.61	.53	.47	.60	.52	.47	.58	.51	.46	.56	.50	.46	.55	.49	.45	.43
7.0	.56	.47	.42	.55	.47	.41	.53	.46	.41	.51	.45	.41	.50	.44	.40	.38
8.0	.51	.43	.37	.50	.42	.37	.48	.42	.37	.47	.41	.36	.46	.40	.36	.34
9.0	.47	.39	.33	.46	.38	.33	.45	.38	.33	.43	.37	.33	.42	.37	.32	.31
10.0	.43	.35	.30	.42	.35	.30	.41	.35	.30	.40	.34	.30	.39	.34	.29	.28



C Range: 0 - 360DEG  
C Interval: 22.5DEG  
Test Speed: HIGH  
Temperature: 28DEG  
Operators: CJY  
Test Date: 2024-08-28

$\gamma$  Range: 0 - 180DEG  
 $\gamma$  Interval: 1.0DEG  
Test System: EVERFINE GO-2000B\_V1 SYSTEM V2.0.401  
Humidity: 65.0%  
Test Distance: 5.190m [K=1.0000]  
Remarks:

TLO010-51 36V250mA CXA1507-30G-NOY 66D 3000K CRI90 NA

### WEC AND CCEC

NAME: TLO010-51	TYPE: 66D	WEIGHT: 1
SPEC.: 3000K CRI90	DIM.:	SERIAL No.:
MFR.:	SUR.: 53	Shielding Angle:

pcc	80%			70%			50%			30%			10%			0	
pw	50%	30%	10%	50%	30%	10%	50%	30%	10%	50%	30%	10%	50%	30%	10%	0	
pfc	20%			20%			20%			20%			20%			0	
RCR	RCR:Room Cavity Ratio						Wall Exitance Coefficients (WEC)										
0.0																	
1.0	.254	.144	.046	.246	.140	.045	.232	.133	.042	.219	.126	.040	.206	.120	.039		
2.0	.248	.136	.042	.241	.133	.041	.228	.127	.039	.217	.122	.038	.206	.117	.037		
3.0	.236	.125	.038	.230	.123	.037	.219	.119	.036	.208	.114	.035	.199	.110	.034		
4.0	.222	.116	.034	.217	.114	.034	.207	.110	.033	.198	.106	.032	.190	.103	.031		
5.0	.209	.107	.031	.205	.105	.031	.196	.102	.030	.188	.099	.029	.180	.096	.029		
6.0	.197	.099	.028	.193	.097	.028	.185	.095	.028	.177	.092	.027	.170	.090	.027		
7.0	.185	.092	.026	.181	.090	.026	.174	.088	.025	.168	.086	.025	.161	.084	.025		
8.0	.175	.085	.024	.171	.084	.024	.165	.082	.024	.159	.080	.023	.153	.079	.023		
9.0	.165	.080	.022	.162	.079	.022	.156	.077	.022	.150	.075	.022	.145	.074	.021		
10.0	.156	.075	.021	.153	.074	.021	.148	.072	.020	.143	.071	.020	.138	.070	.020		

pcc	80%			70%			50%			30%			10%			0
pw	50%	30%	10%	50%	30%	10%	50%	30%	10%	50%	30%	10%	50%	30%	10%	0
pfc	20%			20%			20%			20%			20%			0
RCR	RCR:Room Cavity Ratio						Ceiling Cavity Exitance Coefficients(CCEC)									
0.0	.208	.208	.208	.178	.178	.178	.121	.121	.121	.070	.070	.070	.022	.022	.022	
1.0	.194	.174	.157	.166	.150	.135	.114	.103	.093	.065	.060	.054	.021	.019	.018	
2.0	.184	.150	.121	.158	.129	.105	.108	.089	.073	.062	.052	.043	.020	.017	.014	
3.0	.176	.132	.097	.151	.114	.084	.103	.079	.059	.060	.046	.035	.019	.015	.011	
4.0	.168	.118	.080	.144	.102	.070	.099	.071	.049	.057	.042	.029	.018	.014	.010	
5.0	.161	.108	.068	.138	.093	.059	.095	.065	.042	.055	.038	.025	.018	.012	.008	
6.0	.155	.099	.060	.133	.086	.052	.092	.060	.037	.053	.035	.022	.017	.012	.007	
7.0	.148	.092	.053	.128	.080	.046	.088	.056	.033	.051	.033	.020	.017	.011	.006	
8.0	.143	.087	.048	.123	.075	.042	.085	.053	.030	.049	.031	.018	.016	.010	.006	
9.0	.137	.082	.044	.118	.071	.039	.082	.050	.028	.048	.029	.016	.015	.010	.005	
10.0	.132	.078	.041	.114	.067	.036	.079	.047	.026	.046	.028	.015	.015	.009	.005	

C Range: 0 - 360DEG  
C Interval: 22.5DEG  
Test Speed: HIGH  
Temperature: 28DEG  
Operators: CJY  
Test Date: 2024-08-28

γ Range: 0 - 180DEG  
γ Interval: 1.0DEG  
Test System: EVERFINE GO-2000B\_V1 SYSTEM V2.0.401  
Humidity: 65.0%  
Test Distance: 5.190m [K=1.0000]  
Remarks:

TLO010-51 36V250mA CXA1507-30G-NOY 66D 3000K CRI90 NA

UGR(Unified Glare Rating) Table

NAME: TLO010-51					TYPE:66D			WEIGHT:1			
SPEC.:3000K CRI90					DIM.:			SERIAL No.:			
MFR.:					SUR.:53			Shielding Angle:			
ceiling/cavity	0.7	0.7	0.5	0.5	0.3	0.7	0.7	0.5	0.5	0.3	
walls	0.5	0.3	0.5	0.3	0.3	0.5	0.3	0.5	0.3	0.3	
working plane	0.2	0.2	0.2	0.2	0.2	0.2	0.2	0.2	0.2	0.2	
Room dimensions		Viewed crosswise					Viewed endwise				
x = 2H y = 2H	2H	29.0	30.4	29.3	30.6	30.8	34.9	36.2	35.2	36.5	36.7
	3H	29.1	30.3	29.4	30.6	30.9	35.2	36.5	35.6	36.7	37.0
	4H	29.0	30.2	29.4	30.5	30.8	35.3	36.4	35.6	36.7	37.0
	6H	29.0	30.1	29.3	30.4	30.7	35.2	36.3	35.5	36.6	36.9
	8H	28.9	30.0	29.3	30.3	30.6	35.1	36.2	35.5	36.5	36.8
	12H	28.9	29.9	29.2	30.2	30.5	35.1	36.1	35.5	36.4	36.8
4H	2H	29.7	30.9	30.1	31.2	31.5	34.7	35.9	35.1	36.2	36.5
	3H	29.8	30.9	30.2	31.2	31.5	35.2	36.2	35.6	36.5	36.9
	4H	29.8	30.7	30.2	31.1	31.5	35.2	36.1	35.6	36.5	36.9
	6H	29.8	30.6	30.2	30.9	31.4	35.2	36.0	35.6	36.4	36.8
	8H	29.7	30.5	30.2	30.9	31.3	35.1	35.9	35.6	36.3	36.7
	12H	29.7	30.3	30.1	30.8	31.2	35.1	35.8	35.6	36.2	36.6
8H	4H	29.8	30.6	30.3	31.0	31.4	35.1	35.8	35.5	36.2	36.7
	6H	29.8	30.4	30.3	30.8	31.3	35.1	35.7	35.5	36.1	36.6
	8H	29.8	30.3	30.2	30.7	31.2	35.0	35.6	35.5	36.0	36.5
	12H	29.7	30.2	30.2	30.6	31.2	35.0	35.4	35.5	35.9	36.5
12H	4H	29.8	30.5	30.3	30.9	31.3	35.0	35.7	35.5	36.1	36.6
	6H	29.8	30.3	30.2	30.7	31.2	35.0	35.6	35.5	36.0	36.5
	8H	29.7	30.2	30.2	30.7	31.2	35.0	35.4	35.5	35.9	36.5
Variations with the observer position at spacings:											
S = 1.0H	+ 1.8 / - 2.5					+ 0.7 / - 0.6					
1.5H	+ 2.5 / - 2.6					+ 0.8 / - 1.2					
2.0H	+ 2.5 / - 3.2					+ 2.1 / - 3.1					

CIE Pub.117, 618.1 lm Total Lamp Luminous Flux Correct (8log(F/F0) = -1.7)

C Range: 0 - 360DEG  
C Interval: 22.5DEG  
Test Speed: HIGH  
Temperature:28DEG  
Operators:CJY  
Test Date:2024-08-28

γ Range: 0 - 180DEG  
γ Interval: 1.0DEG  
Test System:EVERFINE GO-2000B\_V1 SYSTEM V2.0.401  
Humidity:65.0%  
Test Distance:5.190m [K=1.0000]  
Remarks:

TL0010-51 36V250mA CXA1507-30G-NOY 66D 3000K CRI90 NA

## UTILIZATION FACTORS TABLE

NAME: TLO010-51	TYPE:66D	WEIGHT:1
SPEC.:3000K CRI90	DIM.:	SERIAL No.:
MFR.:	SUR.:53	Shielding Angle:

REFLECTANCE										
Ceiling	0.8	0.8	0.8	0.7	0.7	0.7	0.5	0.5	0.5	0
Walls	0.7	0.5	0.3	0.7	0.5	0.3	0.7	0.5	0.3	0
Working plane	0.2	0.2	0.2	0.2	0.2	0.2	0.2	0.2	0.2	0
ROOM INDEX	UTILIZATION FACTORS (PERCENT) $k(RI) \times RCR = 5$									
$k = 0.60$	62	51	45	61	51	44	60	50	44	38
0.80	72	62	55	71	61	55	69	61	55	48
1.00	81	71	65	80	71	65	78	71	64	57
1.25	88	79	73	87	78	72	84	77	71	65
1.50	93	84	78	91	83	78	88	81	77	70
2.00	99	92	86	97	90	85	93	88	84	76
2.50	102	96	91	100	94	90	96	91	87	79
3.00	105	99	95	103	98	93	99	94	91	83
4.00	108	103	100	106	102	98	101	98	95	86
5.00	110	106	103	108	104	101	103	100	97	88
ROOM INDEX	UF(total)									Direct
According to DIN EN 13032-2 2004				Suspended				SHR <sub>NOM</sub> = 1.25		

C Range: 0 - 360DEG  
C Interval: 22.5DEG  
Test Speed: HIGH  
Temperature: 28DEG  
Operators: CJY  
Test Date: 2024-08-28

```

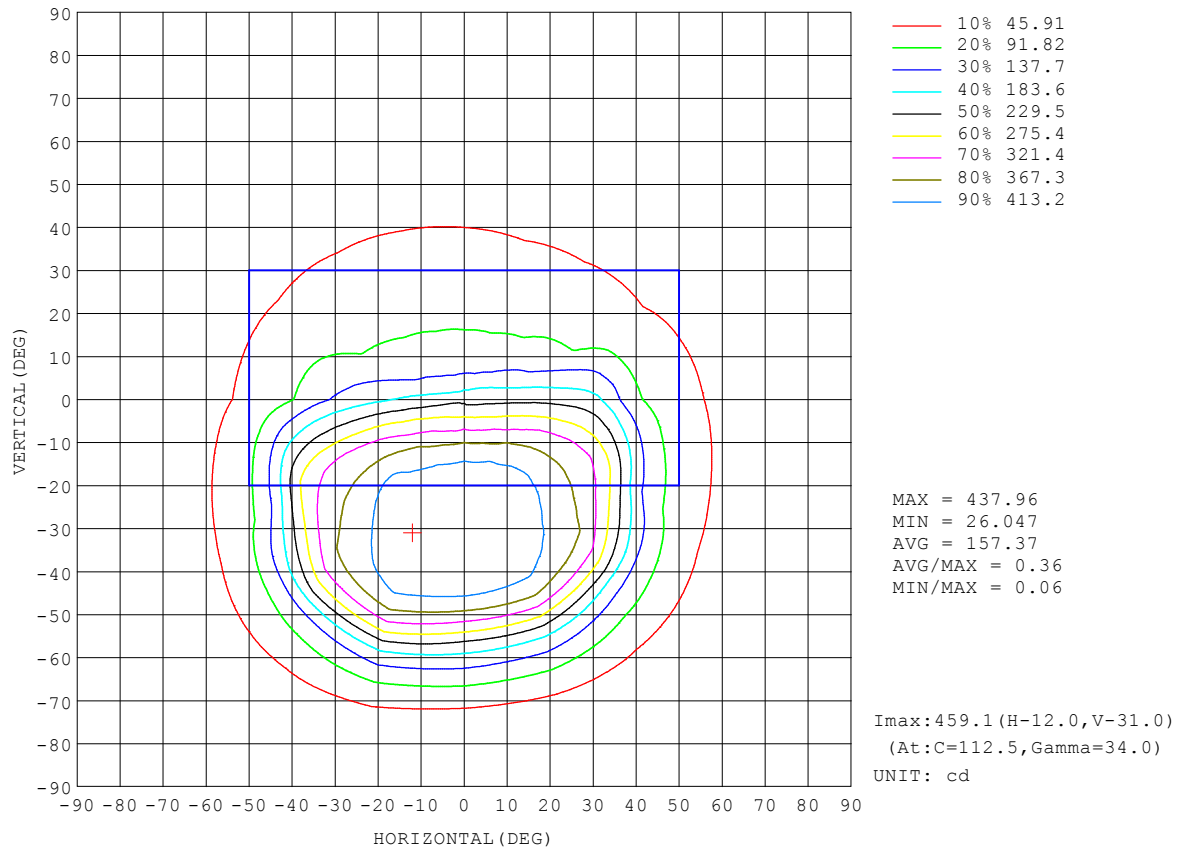
Range: 0 - 180DEG
Interval: 1.0DEG
Test System:EVERFINE GO-2000B_V1 SYSTEM V2.0.401
Humidity:65.0%
Test Distance:5.190m [K=1.0000]
Remarks:

```

TLO010-51 36V250mA CXA1507-30G-NOY 66D 3000K CRI90 NA

### ISOCANDELA DIAGRAM

NAME: TLO010-51	TYPE: 66D	WEIGHT: 1
SPEC.: 3000K CRI90	DIM.:	SERIAL No.:
MFR.:	SUR.: 53	Shielding Angle:



C Range: 0 - 360DEG  
C Interval: 22.5DEG  
Test Speed: HIGH  
Temperature: 28DEG  
Operators: CJY  
Test Date: 2024-08-28

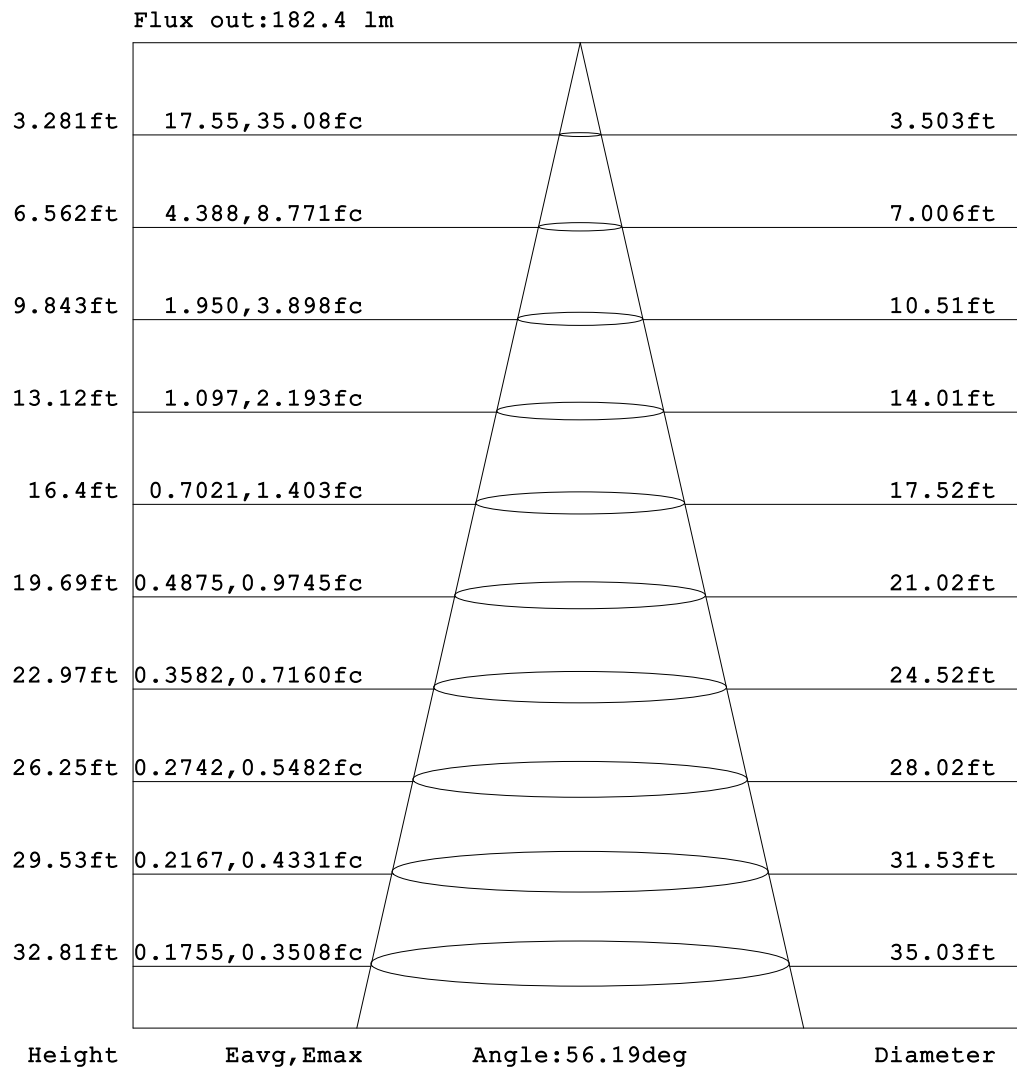
γ Range: 0 - 180DEG  
γ Interval: 1.0DEG  
Test System: EVERFINE GO-2000B\_V1 SYSTEM V2.0.401  
Humidity: 65.0%  
Test Distance: 5.190m [K=1.0000]  
Remarks:



TLO010-51 36V250mA CXA1507-30G-NOY 66D 3000K CRI90 NA

### AAI Figure

NAME: TLO010-51	TYPE: 66D	WEIGHT: 1
SPEC.: 3000K CRI90	DIM.:	SERIAL No.:
MFR.:	SUR.: 53	Shielding Angle:



Note: The Curves indicate the illuminated area and the average illumination when the luminaire is at different distance.

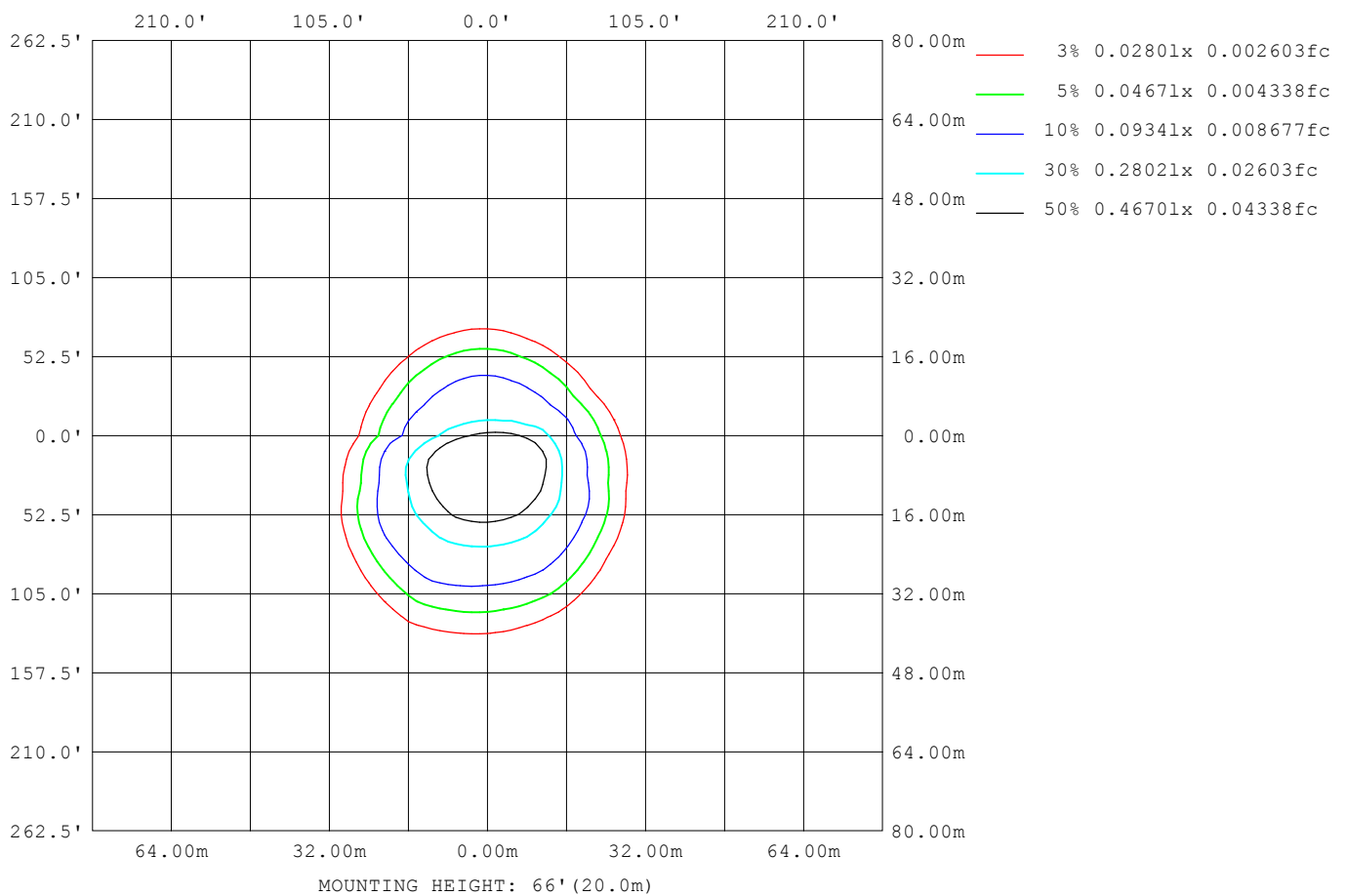
C Range: 0 - 360DEG  
 C Interval: 22.5DEG  
 Test Speed: HIGH  
 Temperature: 28DEG  
 Operators: CJY  
 Test Date: 2024-08-28

γ Range: 0 - 180DEG  
 γ Interval: 1.0DEG  
 Test System: EVERFINE GO-2000B\_V1 SYSTEM V2.0.401  
 Humidity: 65.0%  
 Test Distance: 5.190m [K=1.0000]  
 Remarks:

TLO010-51 36V250mA CXA1507-30G-NOY 66D 3000K CRI90 NA

### ISOLUX DIAGRAM

NAME: TLO010-51	TYPE: 66D	WEIGHT: 1
SPEC.: 3000K CRI90	DIM.:	SERIAL No.:
MFR.:	SUR.: 53	Shielding Angle:



C Range: 0 - 360DEG  
C Interval: 22.5DEG  
Test Speed: HIGH  
Temperature: 28DEG  
Operators: CJY  
Test Date: 2024-08-28

γ Range: 0 - 180DEG  
γ Interval: 1.0DEG  
Test System: EVERFINE GO-2000B\_V1 SYSTEM V2.0.401  
Humidity: 65.0%  
Test Distance: 5.190m [K=1.0000]  
Remarks:

TLO010-51 36V250mA CXA1507-30G-NOY 66D 3000K CRI90 NA

## LED Avg.L Report

NAME: TLO010-51	TYPE: 66D	WEIGHT: 1
SPEC.: 3000K CRI90	DIM.:	SERIAL No.:
MFR.:	SUR.: 53	Shielding Angle:

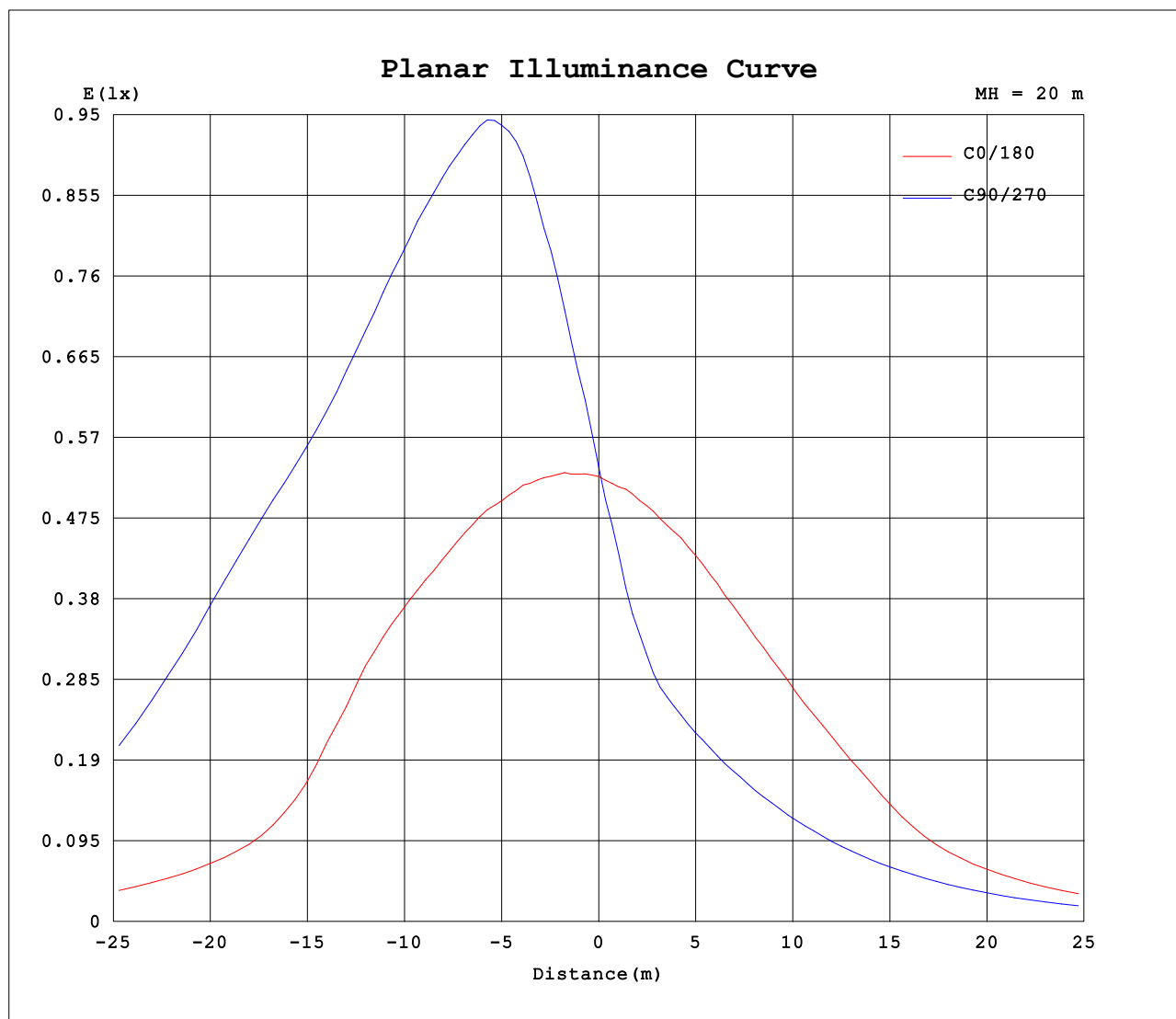
AvgL	cd/m2
L_0~180 (65) av	24620
L_0~180 (75) av	11880
L_0~180 (85) av	3347
L_90~270 (65) av	64497
L_90~270 (75) av	27300
L_90~270 (85) av	5250
L_45 (65) av	41033
L_45 (75) av	19050
L_45 (85) av	5682

Standard: GB/T 29293-2012

C Range: 0 - 360DEG  
C Interval: 22.5DEG  
Test Speed: HIGH  
Temperature: 28DEG  
Operators: CJY  
Test Date: 2024-08-28

γ Range: 0 - 180DEG  
γ Interval: 1.0DEG  
Test System: EVERFINE GO-2000B\_V1 SYSTEM V2.0.401  
Humidity: 65.0%  
Test Distance: 5.190m [K=1.0000]  
Remarks:

## Planar Illuminance Curve



C Range: 0 - 360DEG  
C Interval: 22.5DEG  
Test Speed: HIGH  
Temperature: 28DEG  
Operators: CJY  
Test Date: 2024-08-28

$\gamma$  Range: 0 - 180DEG  
 $\gamma$  Interval: 1.0DEG  
Test System: EVERFINE GO-2000B\_V1 SYSTEM V2.0.401  
Humidity: 65.0%  
Test Distance: 5.190m [K=1.0000]  
Remarks:

TLO010-51 36V250mA CXA1507-30G-NOY 66D 3000K CRI90 NA

## LUMINOUS DISTRIBUTION INTENSITY DATA

NAME: TLO010-51	TYPE: 66D	WEIGHT: 1
SPEC.: 3000K CRI90	DIM.:	SERIAL No.:
MFR.:	SUR.: 53	Shielding Angle:

Table--1

UNIT: cd

C (DEG) γ (DEG)	0	22.5	45	67.5	90	112.5	135	157.5	180	202.5	225	247.5	270	292.5	315	337.5			
0	213	213	213	213	213	213	213	213	213	213	213	213	213	213	213	213			
5	217	247	270	288	290	281	262	237	207	179	160	150	146	151	165	189			
10	220	279	328	360	365	348	310	258	199	150	123	115	110	113	127	163			
15	221	312	379	417	417	404	355	278	190	125	106	99.1	94.5	96.0	103	139			
20	219	335	408	443	433	431	389	299	177	108	92.7	86.3	81.9	82.7	89.0	117			
25	213	343	410	452	441	444	403	308	162	95.6	81.2	75.6	71.2	71.5	76.9	97.4			
30	199	335	403	453	440	456	400	311	145	84.1	70.8	65.8	61.6	61.4	66.0	81.8			
35	156	308	389	450	436	456	388	306	122	72.9	61.3	57.0	53.2	52.5	56.3	68.8			
40	103	235	371	436	440	450	372	285	91.1	62.3	52.6	48.9	45.6	44.4	47.1	57.0			
45	79.1	149	320	407	420	427	354	215	70.9	52.4	44.5	41.3	38.3	36.8	38.6	46.3			
50	63.5	101	226	335	350	382	304	129	56.5	42.9	36.9	34.1	31.5	29.7	30.8	36.4			
55	49.0	75.1	139	231	255	299	212	85.1	43.9	34.0	29.6	27.3	25.2	23.1	23.5	27.3			
60	35.6	53.0	88.1	148	168	192	118	60.9	32.5	25.7	22.7	20.7	18.9	16.8	16.7	19.0			
65	23.7	34.3	52.3	90.1	107	120	73.8	42.3	22.2	18.0	16.2	14.5	12.9	11.1	10.7	11.7			
70	13.7	19.4	28.0	47.6	60.2	67.5	43.6	27.1	13.3	11.1	10.4	9.24	8.02	6.55	6.01	6.36			
75	6.77	9.04	12.1	20.8	26.9	32.5	22.8	15.3	6.79	6.08	5.80	5.15	4.30	3.20	2.79	2.85			
80	2.60	3.11	3.46	6.45	9.09	12.3	9.60	7.03	2.83	2.75	2.65	2.25	1.70	1.11	0.90	0.83			
85	0.58	0.54	0.39	0.72	1.42	2.84	2.68	2.35	0.71	0.81	0.85	0.71	0.59	0.58	0.45	0.27			
90	0.33	0.29	0.24	0.23	0.22	0.21	0.30	0.38	0.33	0.41	0.60	0.78	0.90	0.91	0.71	0.41			
95	0.44	0.37	0.30	0.28	0.23	0.23	0.20	0.24	0.44	0.61	0.91	1.19	1.36	1.36	1.06	0.63			
100	0.59	0.46	0.38	0.35	0.29	0.29	0.26	0.31	0.59	0.89	1.33	1.71	1.90	1.90	1.49	0.93			
105	0.80	0.58	0.47	0.43	0.37	0.36	0.34	0.40	0.80	1.27	1.82	2.30	2.51	2.49	1.99	1.29			
110	1.08	0.73	0.58	0.53	0.46	0.45	0.43	0.52	1.11	1.72	2.36	2.93	3.17	3.10	2.51	1.68			
115	1.41	0.92	0.71	0.63	0.55	0.54	0.54	0.67	1.46	2.22	2.95	3.59	3.83	3.71	3.04	2.09			
120	1.78	1.16	0.85	0.75	0.66	0.65	0.67	0.86	1.85	2.74	3.54	4.22	4.49	4.28	3.53	2.50			
125	2.17	1.44	1.02	0.88	0.78	0.78	0.82	1.09	2.27	3.24	4.09	4.81	5.05	4.75	3.94	2.90			
130	2.57	1.76	1.24	1.02	0.91	0.91	1.01	1.35	2.72	3.72	4.57	5.28	5.49	5.10	4.24	3.24			
135	2.98	2.11	1.50	1.20	1.06	1.09	1.24	1.64	3.15	4.13	4.95	5.63	5.83	5.33	4.43	3.48			
140	3.38	2.49	1.82	1.44	1.27	1.32	1.52	1.96	3.55	4.46	5.22	5.84	6.03	5.45	4.48	3.63			
145	3.75	2.89	2.20	1.75	1.56	1.62	1.84	2.30	3.91	4.71	5.40	5.95	6.09	5.49	4.49	3.71			
150	4.09	3.32	2.63	2.16	1.93	2.00	2.22	2.65	4.22	4.91	5.53	5.98	6.04	5.50	4.51	3.74			
155	4.41	3.76	3.11	2.66	2.42	2.45	2.63	2.99	4.52	5.10	5.60	6.00	6.01	5.52	4.61	3.85			
160	4.72	4.19	3.62	3.22	2.96	2.95	3.06	3.30	4.80	5.28	5.68	5.98	5.92	5.56	4.77	4.08			
165	5.03	4.60	4.15	3.81	3.54	3.49	3.49	3.55	5.10	5.47	5.75	5.97	5.83	5.54	4.88	4.31			
170	5.29	5.00	4.64	4.40	4.13	4.03	3.87	3.89	5.35	5.64	5.79	5.84	5.63	5.40	4.90	4.49			
175	5.48	5.35	5.10	4.94	4.66	4.49	4.29	4.24	5.54	5.69	5.72	5.69	5.39	5.22	4.85	4.58			
180	5.59	5.60	5.47	5.40	5.11	4.91	4.68	4.52	5.60	5.59	5.50	5.40	5.11	4.92	4.68	4.54			

C Range: 0 - 360DEG  
C Interval: 22.5DEG  
Test Speed: HIGH  
Temperature: 28DEG  
Operators: CJY  
Test Date: 2024-08-28

γ Range: 0 - 180DEG  
γ Interval: 1.0DEG  
Test System: EVERFINE GO-2000B\_V1 SYSTEM V2.0.401  
Humidity: 65.0%  
Test Distance: 5.190m [K=1.0000]  
Remarks: